



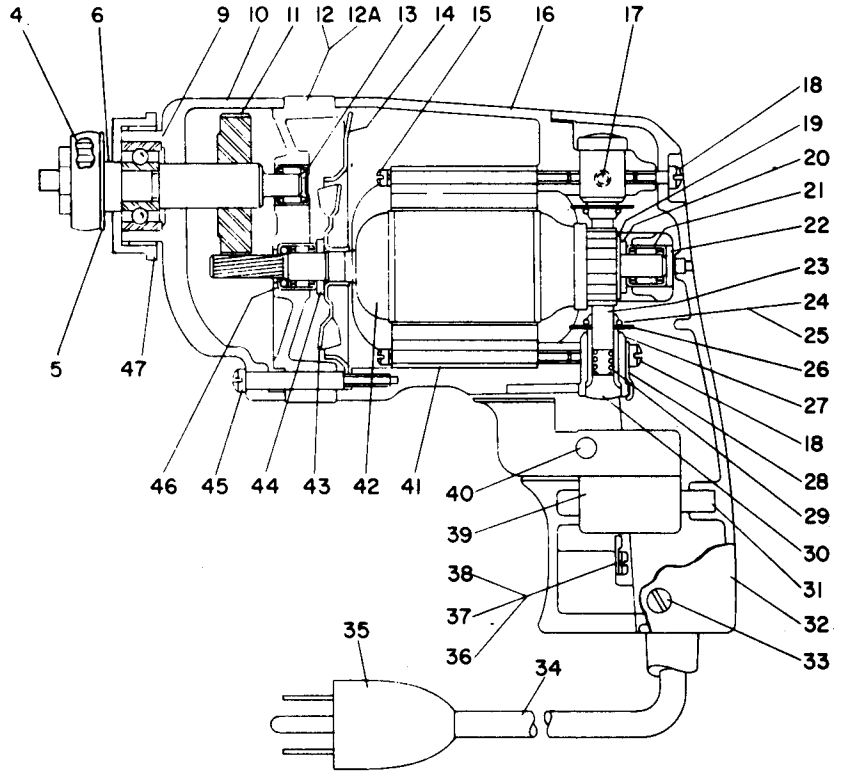
# MODEL B-190 ELECTRIC SHEAR PARTS LIST

## 253-22 Power Unit Parts Identification

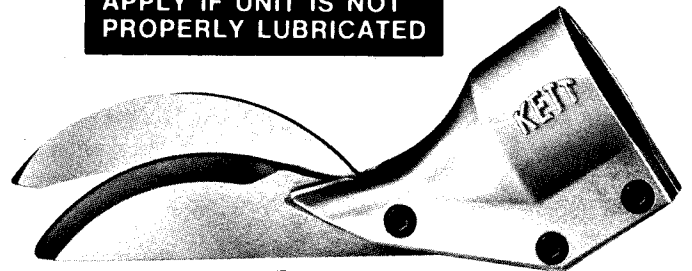
| Index No. | Part No. | Description  |
|-----------|----------|--|
| 4         | 60-24    | Eccentric Bearing Assembly (Incl. Hex. Eccentric, Outer Ring & Needle Bearing) |
| 5         | 60-25    | Thin Washer, Large   |
| 6         | 56280-01 | Thick Washer, Small  |
| 9         | 17541    | Ball Bearing   |
| 10        | 70591    | Gear Case  |
| 11        | 70594    | Spindle & Gear   |
| 12        | 52228    | Gear Case Cover Assem. (Incl. Nos. 12A, 13, 46)                                |
| 12A       | 50560    | Gear Case Cover  |
| 13        | 20812    | Needle Bearing   |
| 14        | 38016    | Fan Baffle Plate   |
| 15        | 25999    | #6-32 x 2" Fill. Hd. Scr. & W. (2)   |
| 16        | 56377-01 | Field & Switch Case (Also 57035)   |
| 17        | 27760    | #8-32 x 1/4" Slotted, Cup Point Set Screw (Torque To 4-7 In. Lbs.)             |
| 18        | 2178     | #8-32 x 3/8" Fill. Hd. Scr. (2)  |
| 19        | 48601    | Spring Washer  |
| 20        | 37414    | Fibre Washer   |
| 21        | 50573    | Roller Bearing   |
| 22        | 50575    | Bearing Seal   |
| 23        | 49940    | Brush (2)  |
| 24        | 50182    | Brush Lead Terminal (2)  |
| 25        | 50230-01 | Connector (2)  |
| 26        | 27766    | Insulating Shield (2)  |
| 27        | 55443    | Brush Holder (115V) (2)  |
|           | 50233    | Brush Holder (220V) (2)  |
| 28        | 36542    | Brush Holder Clamp   |
| 29        | 50130    | Brush Spring (2)   |
| 30        | 49944    | Brush Holder Plug (2)  |
| 31        | 30613    | Rubber Plug  |
| 32        | 58159-01 | Switch Handle Cover  |
| 33        | 21348    | #8-32 x 5/16" Oval Hd. Scr. (2)  |
| 34        | 52900-98 | Cord & Plug (#18-3 SJT-7 Ft.)  |
| 35        | 36478    | Attachment Plug  |
| 36        | 2379     | #8-32 x 5/16" Bind. Hd. Term. Scr. (Grd.)                                      |
| 37        | 418      | #8 Lockwasher  |
| 38        | 1747     | Lead Terminal  |
| 39        | 57362    | Switch (Also 56924)  |
| 40        | 57363    | Switch Button  |
| 41        | 57587-71 | Field (115V) (Incl. No. 24 [2], 25 [2])  |
|           | 57587-75 | Field (220V) (Incl. No. 24 [2], 25 [2])  |
|           | 57587-95 | Field (100V) (Incl. No. 24 [2], 25 [2])  |
| 42        | 57642-31 | Armature & Fan (100V-115V) (Incl. No. 43)                                      |
|           | 50581-42 | Armature & Fan (220V-240V) (Incl. No. 43)                                      |
| 43        | 27773-01 | Fan  |
| 44        | 50584    | Felt Washer  |
| 45        | 39544    | #8-32 x 1 1/2" Dowel Scr.  |
| 46        | 52483    | Roller Thrust Bearing  |
| 47        | 70593    | Gear Case Adaptor  |

### PARTS NOT SHOWN

|       |  |
|-------|--|
| 13358 | #8-32 x 2" Fill. Hd. Scr. (2) (In Gear Case) |
| 56378 | Switch Spring                                |



**WARRANTY DOES NOT  
APPLY IF UNIT IS NOT  
PROPERLY LUBRICATED**



**90-20 Shear Head**  
(see reverse side of sheet)

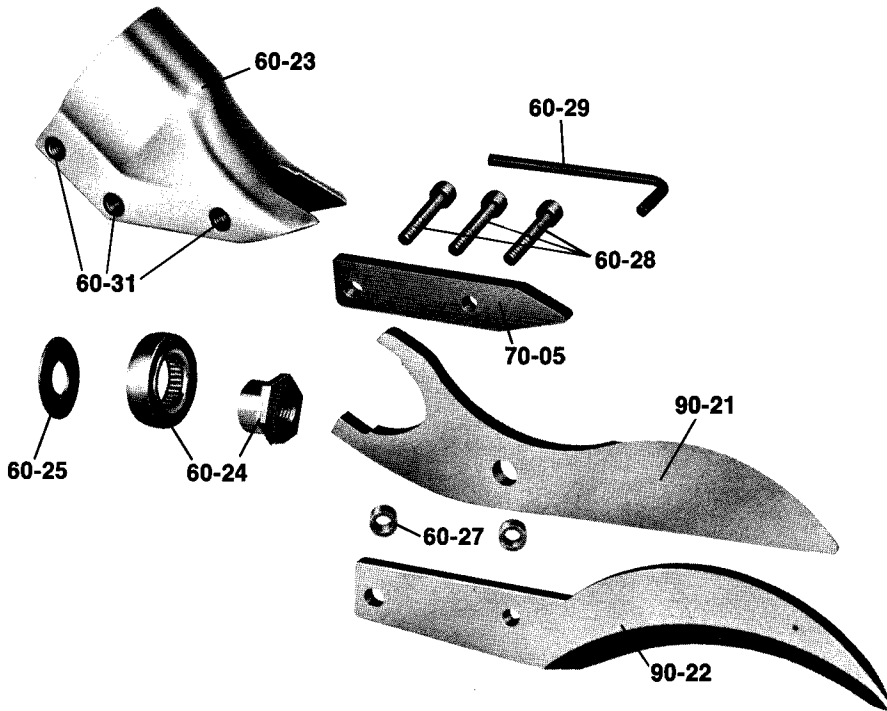
### CAUTION:

**KEEP HANDS AWAY FROM THE CUTTING  
BLADES AT ALL TIMES TO AVOID SERIOUS  
INJURY.**

Place the material being cut on a clean, clear surface. Make certain there is nothing beneath that could be mistakenly cut. Be certain the power cord is in the clear and free. The locking device has purposely been removed from the power unit for the sake of safety. If by chance a locking device is later installed on the power unit it SHOULD NEVER be locked in the "ON" position.



## INSTRUCTIONS FOR THE CARE OF THE KETT 90-20 SHEAR HEAD



### CAUTION

**Disconnect Power Unit  
Before Servicing Tool**

### PARTS LIST

|       |                            |
|-------|----------------------------|
| 60-23 | Shear Housing              |
| 60-24 | Eccentric Bearing Assembly |
| 60-25 | Thin Washer, Large         |
| 60-27 | Spacer Bushing (2)         |
| 60-28 | Cap Screw (3)              |
| 60-29 | Allen Wrench               |
| 60-31 | Knurled Insert (3)         |
| 70-05 | Side Spacer                |
| 90-21 | Center Blade               |
| 90-22 | Side Knife                 |

**DISASSEMBLY:** To remove the shear head from the motor loosen three cap screws (60-28). Remove shear head from motor by pulling head firmly forward. Slight twisting action may be required if head does not slide off easily.

To remove cutter blades from shear head remove three cap screws (60-28) completely from shear housing (60-23). Be careful not to lose rear spacer bushing (60-27) when removing middle cap screw. Remove center blade (90-21) from shear housing by tapping blade gently rearward. Be careful not to lose spacer bushing (60-27) from hole in center blade. Side knife (90-22) and side spacer (70-05) will now drop out of the shear housing.

To remove eccentric bearing assembly (60-24) from shaft use an appropriate wrench to loosen eccentric nut by turning counter clockwise.

**ASSEMBLY:** To install eccentric bearing assembly (60-24) onto shaft make sure the large thin washer (60-25) is first inserted over shaft. Screw eccentric bearing assembly onto shaft and tighten with appropriate wrench. Lubricate bearing with a good grade of bearing grease.

To install cutter blades into shear housing (60-23) place the side knife (90-22) and side spacer (70-05) into position in the shear housing (60-23). Insert center cap screw (60-28) through side knife and side spacer with rear spacer bushing (60-27) between them and start cap screw into thread just enough to hold blades in place. **DO NOT TIGHTEN.** Insert spacer bushing (60-27) into hole in center blade (90-21) and lubricate with a good grade of bearing grease. Install center blade into shear housing by tapping blade gently forward using a drift to line up hole in center blade with forward holes in housing. Insert and tighten forward cap screw (60-28) making sure spacer bushing (60-27) in center blade stays in position. Apply good grade of bearing grease to clevis or yoke in center blade where it rides on the eccentric bearing assembly. Insert rear cap screw (60-28) into shear housing but do not completely tighten.

To install shear head assembly onto drive motor make sure all cap screws (60-28) are loosened about three or four complete turns. Place shear head onto unit and tighten cap screws snugly to lock head assembly in place. It may be necessary to gently tap the shear head into place if it does not readily slip onto the nose of the power unit.

**WARNING: THE KETT TOOL CO. CANNOT ASSUME RESPONSIBILITY FOR DAMAGE TO OR MALFUNCTION OF A KETT SHEAR HEAD USED IN COMBINATION WITH ANY DRILL OTHER THAN THOSE REGULARLY SUPPLIED BY US.**