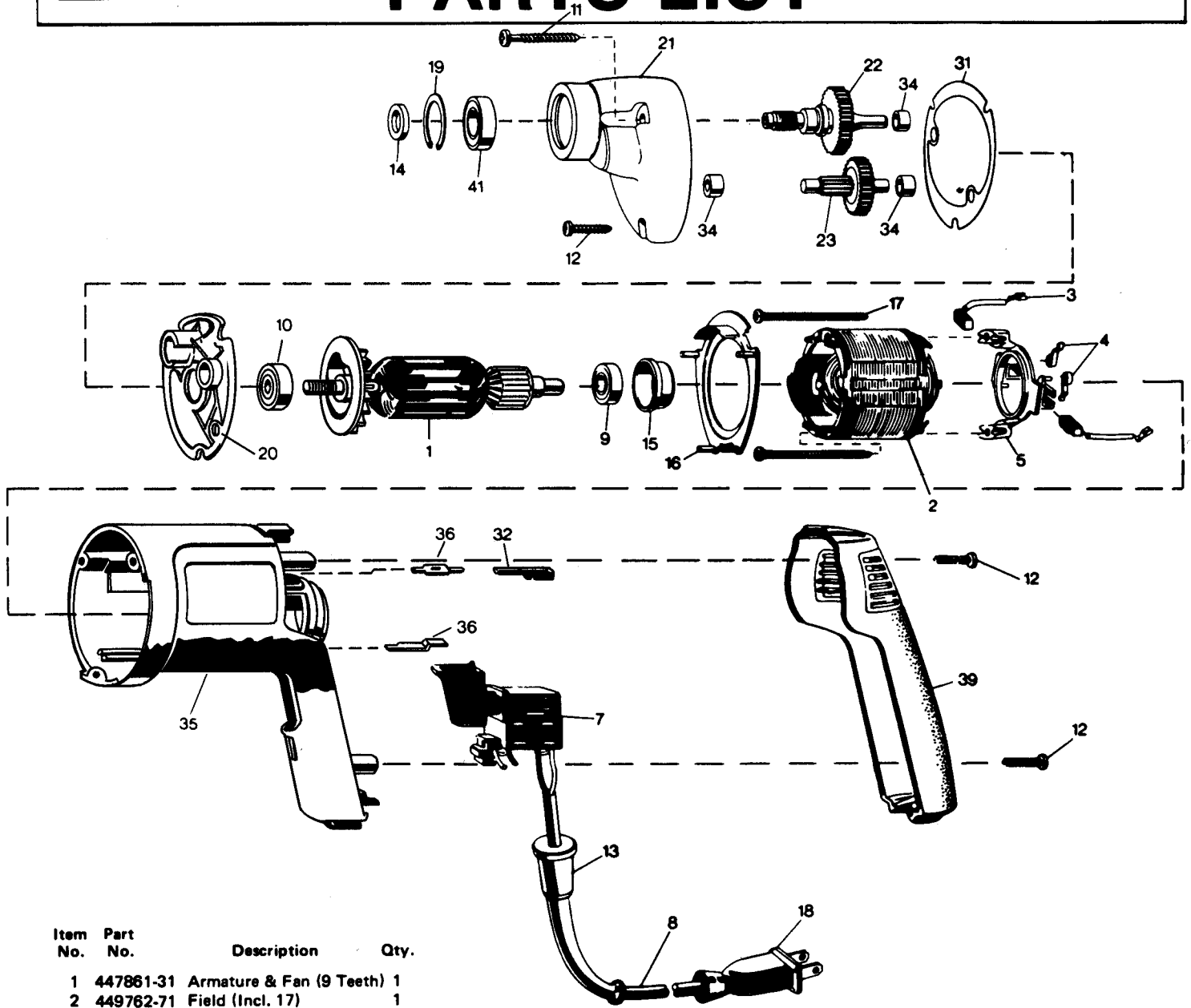


Component Motor Unit Model 253-45
 Used on K-242, K-270, K-280 and K-290 Shears; KS-221, KS-224 and KS-226 Saws.

PARTS LIST



Item No.	Part No.	Description	Qty.
1	447861-31	Armature & Fan (9 Teeth)	1
2	449762-71	Field (Incl. 17)	1
3	445861-01	Brush	2
4	445860	Brush Spring	2
5	445884	Brush Holder	1
7	447869	Switch	1
8	448557-98	Cord & Plug (18-2 SJ)	1
9	400285	Ball Bearing	1
10	400285	Ball Bearing	1
11	95048	8-16 x 1-1/2" Thread Forming Screw	2
12	978114	8-16 x 13/16" Thread-Forming Screw	3
13	24288	Cord Protector	1
14	132809	Spacer	1
15	445217	Sleeve	1
16	447866	Fan Baffle	1
17	448269	6-19 x 2-1/4" Thread-Forming Screw	2
18	234900-02	Attachment Plug	1
19	87692	Retaining Ring	1
20	448658-02	Gear Case Cover (Incl. 10, 34)	1
21	132697-03	Gear Case (Incl. 34, 41, 19)	1

Item No.	Part No.	Description	Qty.
22	445352	Spindle & Gear (37 Teeth) (3/8-24 Thd.)	1
23	132323-03	Int. Gear & Pinion (44/15 Teeth)	1
31	133954-01	Gasket	1
32	449192	Terminal	2
34	131557	Sleeve Bearing	3
35	447838-03	Field Case (Incl. 36)	1
36	445881	Contact Strip (Field Terminal-Short)	2
39	447867-01	Handle Cover	1
41	49423-02	Ball Bearing	1

NOTES:

- 9 Press Bearing flush with end of shaft; seal faces Commutator
- 10 Press Bearing to bottom of bore; seal faces Gear
- 41 Seal faces Gear